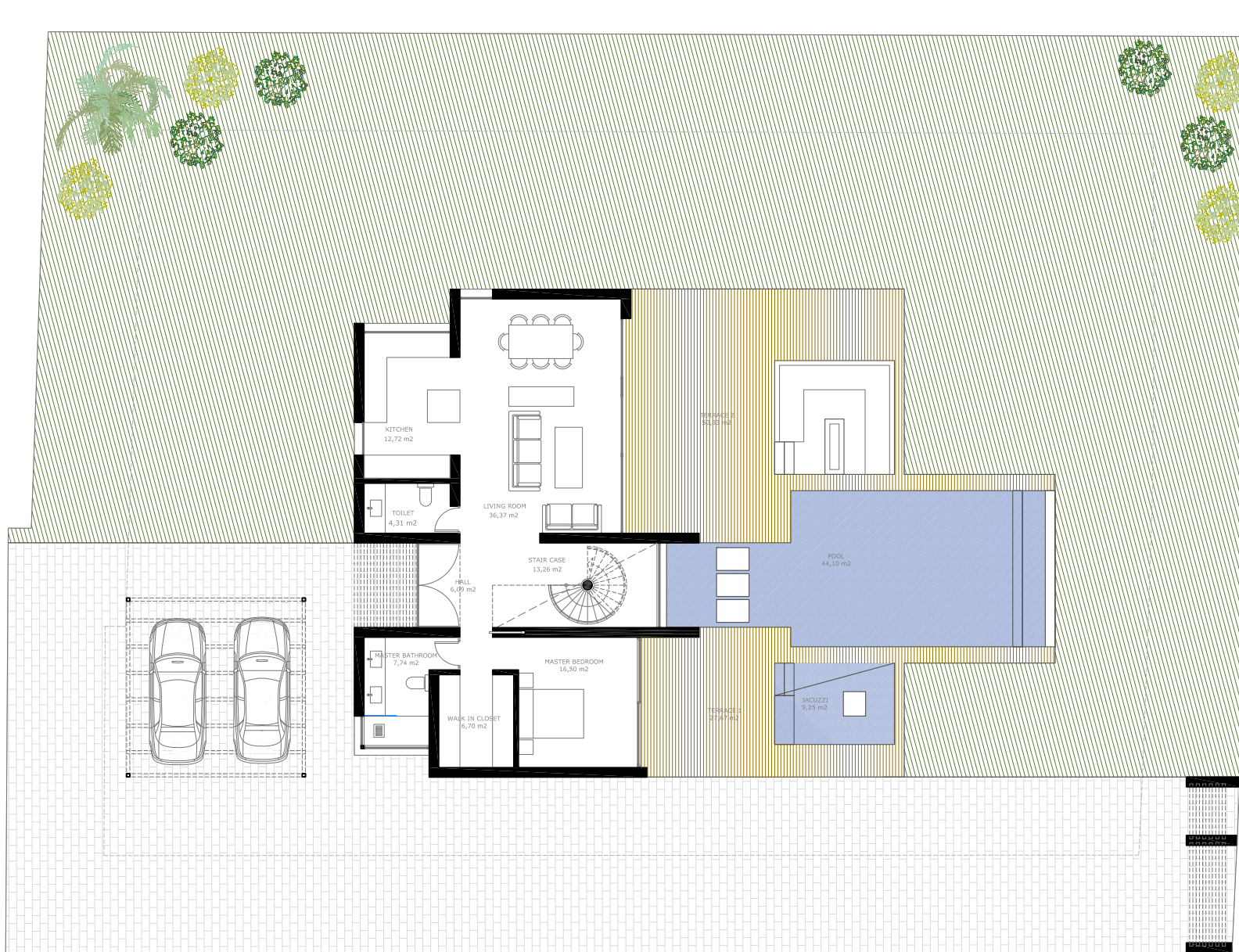
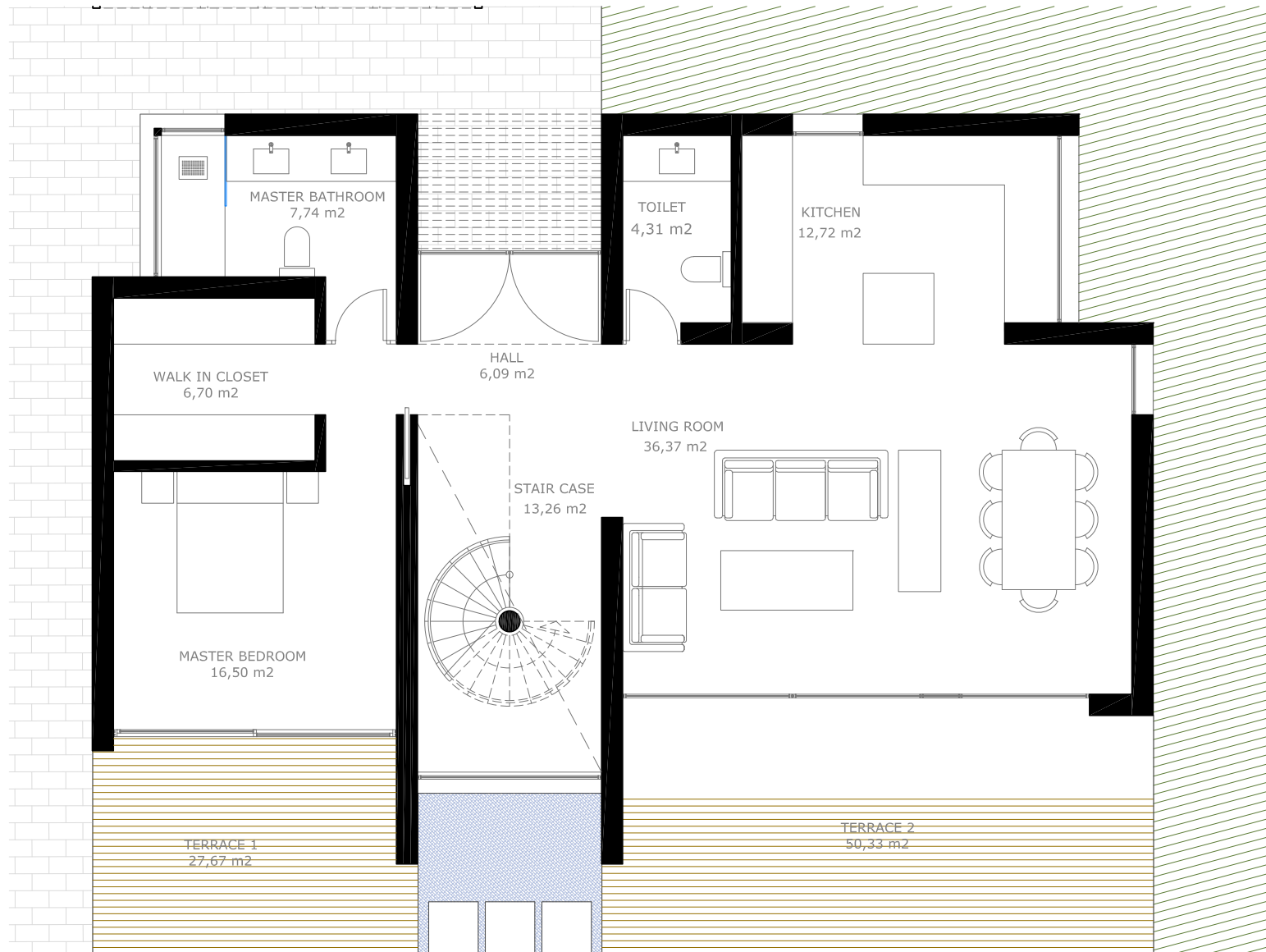


# MASTERPLAN

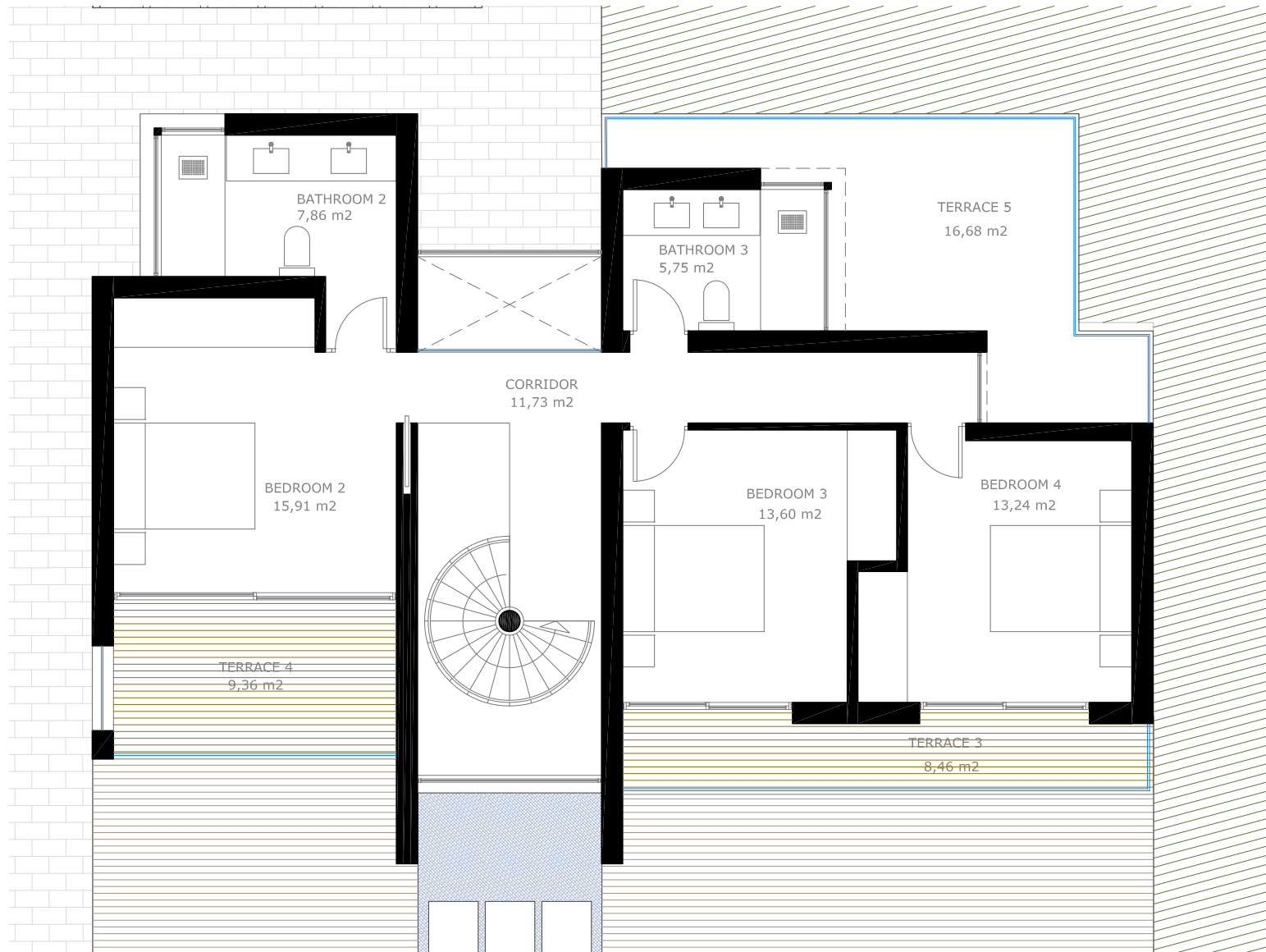


# GROUND FLOOR



Built Living Area: 123,60 m<sup>2</sup>  
Terraces: 78 m<sup>2</sup>  
Pool: 44,10 m<sup>2</sup>

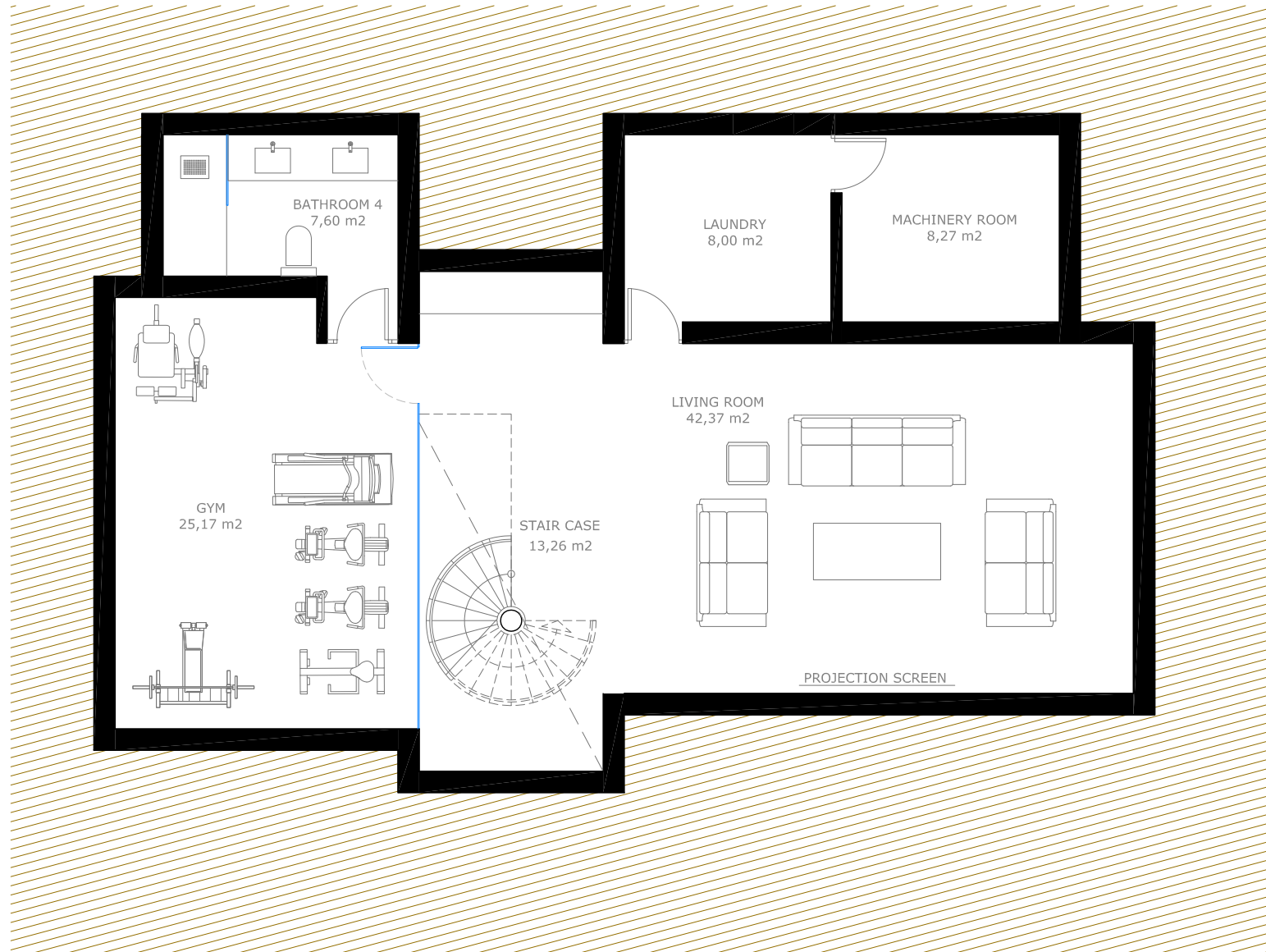
# FIRST FLOOR



Built Living Area: 99,84 m<sup>2</sup>  
Terraces: 34,50 m<sup>2</sup>

# BASEMENT (EXTRA): 111.150€

Same finishes as the rest of the villa, without divisions



Built Living Area: 123,50 m<sup>2</sup>